



# BITZER INFORMATION LETTER

2017 / UPDATE BITZER GSD Series / GSD80235 (20t) Facelift

## Update on BITZER GSD Series

(GSD80235 (20t) DV.2, “Facelift”)

### The most important points:

- New GSD80235 (20t) model added to “facelift”
- All GSD8’s now in common housing and dimensions
- Complete transition of all ORBIT Series to “facelift”

### New Facelift Model



With this update, all ORBIT Series (ORBIT 6, ORBIT 8 Standard & ORBIT 8 Boreal) are now available as facelift version DV.2.

Key points are:

- Maintains GSD80235VA (Standard – air cooled applications) and GSD80235VW (Boreal – water cooled applications) facelift models DV.2.
- The new size GSD80235 DV.2 now shares the same interface points as sizes GSD80295-GSD80485 DV.2. This offers you the chance to further simplify/standardize your piping.
- There are no changes in electrical or performance data.
- The GSD80235 DV.2 is backwards compatible with DV.1 by adapting the system piping design.
- In Tandem un-even applications with conventional piping, flow washer is required.
- Increased evaporating temperature limit to 20°C (68°F) for telecom & data center applications for GSD80235VA DV.2, consistent now with other ORBIT 8 air cooled models.
- Variable speed capability of 35 – 75 Hz (depending on the motor version), consistent now with other ORBIT 8 models.

### GSD80235 DV.2 Application Envelope / Speed Range

The Facelift GSD80235VA (air cooled application) envelope expanded its evaporating temperature limit to 20°C (68°F) for telecom & data center applications, now consistent with other ORBIT 6 & 8 Series DV.2. There are no changes in the application envelope of the ORBIT 8 Boreal models.

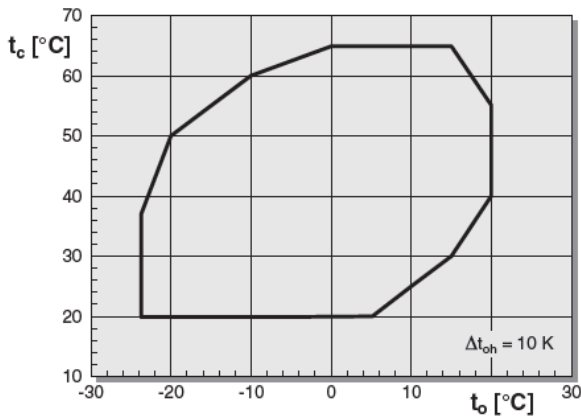


# BITZER INFORMATION LETTER

2017 / UPDATE BITZER GSD Series / GSD80235 (20t) Facelift

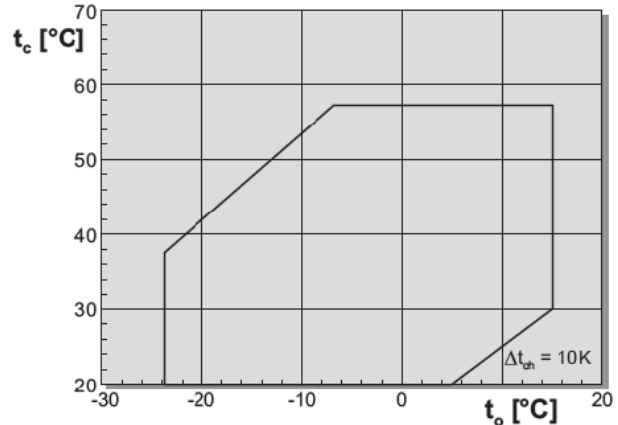
ORBIT 6  
ORBIT 8: GSD80235..GSD80485  
for air-cooled systems and reversible chillers

## STANDARD



ORBIT 8: GSD80235..GSD80485  
Boreal for systems with low condensing temperature

## BOREAL

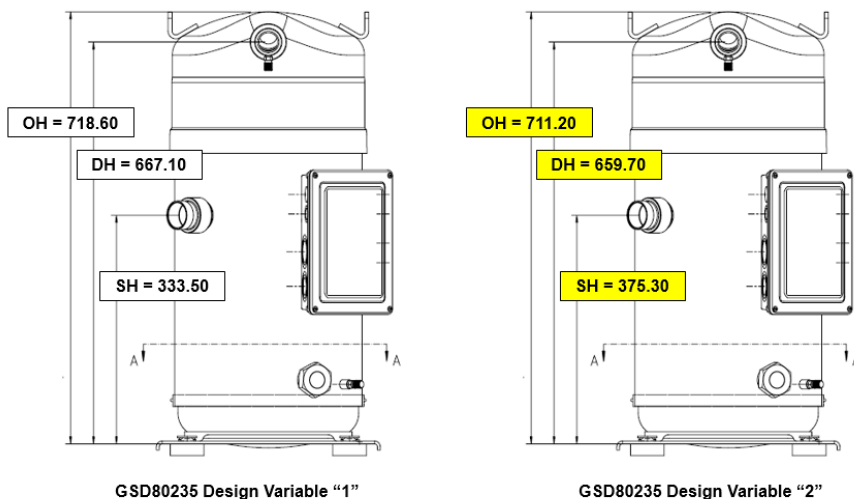


The variable speed capability of the facelift GSD80235 (DV.2) is 35 – 75 Hz, now consistent with other ORBIT Series. *For full application envelope, selection of motor code 2 (200V-50Hz or 208/230V-60Hz) is generally required.*

## GSD80235 DV.2 Compatibility & Dimensions

The Facelift GSD80235 DV.2 compressor models are functionally “backwards compatible” with DV.1 compressors, but **do** have changes to the external compressor dimensions and piping connection locations when compared with DV.1 compressors. The dimensional changes standardize the GSD80235 DV.2 with the other GSD8 compressor models DV.2 and are illustrated in the diagrams that follow. Application drawings / BITZER software will updated.

### Brazed and Rotalok Connections: Vertical Height Dimensions



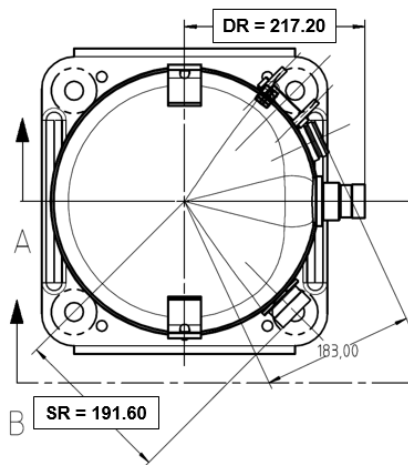
**All GSD8's models now with standardize common housing dimensions!**



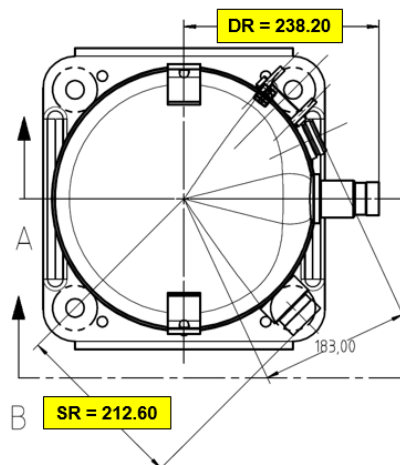
# BITZER INFORMATION LETTER

2017 / UPDATE BITZER GSD Series / GSD80235 (20t) Facelift

## Brazed and Rotalock Connections: Horizontal Dimensions



GSD80235 Design Variable "1"



GSD80235 Design Variable "2"

In case you have questions please do not hesitate to contact us.



BITZER Austria GmbH  
Asperngasse 4  
8020 Graz // Austria  
Tel +43 (0)316 58 27 67-0  
Fax +43 (0)316 58 27 67-67  
[technik@bitzer.at](mailto:technik@bitzer.at)

Learn more about our products at [www.bitzer.de](http://www.bitzer.de) //  
Erfahren Sie mehr über unsere Produkte unter [www.bitzer.de](http://www.bitzer.de)